



Laakfeld

SHOWER SQUEEGEE »KLARA«



DURABLE. RELIABLE. RESPONSIBLE.



CONTENTS

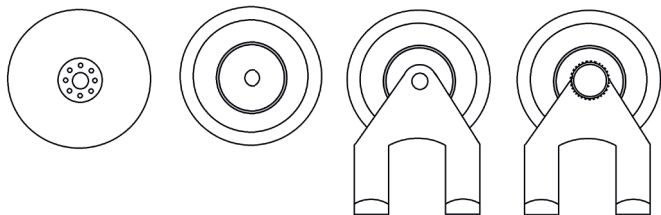
1x shower squeegee, 1x wall mount consisting of a suction cup, a cover cap, a hook and a lock

INSTRUCTIONS

STEP 1: Clean the place where the suction cup is to be attached to (preferably a smooth surface) as well as the suction cup itself with water and dishwashing detergent, and then dry the area completely. Press the suction cup firmly onto the cleaned surface at the desired height.

SCHRITT 2: First put the cap and then the hook on the protruding part of the suction cup. Make sure that the hook is facing away from the wall. Now attach the hook to the suction cup by putting the cap over it, turning the cap to the right until it resists. Turn the fastener to the right until it resists and check for stability.

STEP 3: Now you can hang the shower squeegee on the hook. We recommend that you wipe the area you want to dry with the shower squeegee from top to bottom.



CARE INSTRUCTIONS, DISPOSAL INFO, FAQs AND MUCH MORE.

www.laakfeld.de

FURTHER QUESTIONS AND/OR COMMENTS?

kontakt@laakfeld.de